

# TOOL TRAINING

## BAND SAW

**Kiewit**

### PRIOR TO USE & PRE-CUTTING INSPECTION

- Only trained workers can operate the tool
- Wear PPE required by the project
- De-energize the tool by removing the battery
- Inspect the tool for damage and functionality
- Ensure the blade is sharp & and recommended by the manufacturer



### SET UP & ACCESS

- Use a table, sawhorse, etc.
- Secure the work while cutting
- Remove tripping hazards around the station
- Check material for obstructions such as nails and screws



### USING THE SAW

- Use two hands with a firm grip and proper balance must be maintained during operation
- Use work clamps or a vice to hold down the materials that are being cut
- Clean up debris as you go



Scan for the Tool Video

**PERFORM  
PROTECT™**

**DEWALT**

## Band Saw “Do Not’s”

*Do not attempt to cut materials that are not secured*

*Do not attempt to cut materials too fast, let the tool do the work*

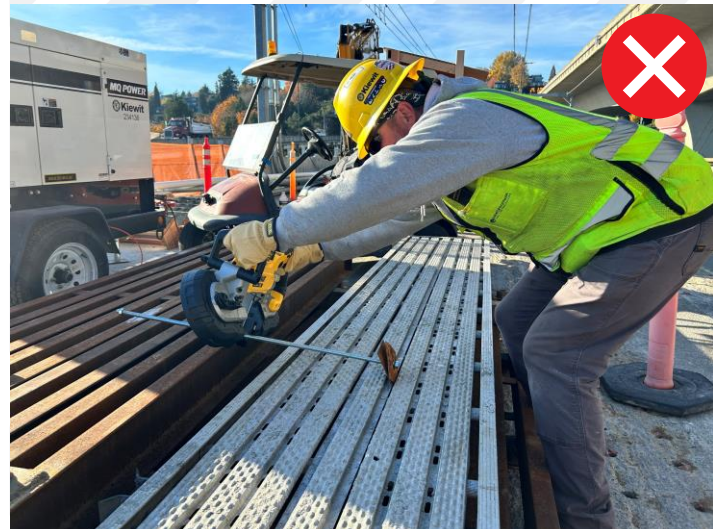
*Do not use a dull or bent saw blade*

*Do not overreach when cutting, always keep proper footing and balance*

*Do not modify the band saw in any way*

*Do not use the tool if any switch does not turn on or off properly*

*Do not attempt to catch cut ends of material as they fall*



Scan for the Tool Video

# SIGN OFFS

Project: \_\_\_\_\_ Date: \_\_\_\_\_

Superintendent: \_\_\_\_\_ Foreman: \_\_\_\_\_

## CREW MEMBER SIGN OFF