

TOOL TRAINING

DRILL MOTOR

Kiewit

PRIOR TO USE & PRE-CUTTING INSPECTION

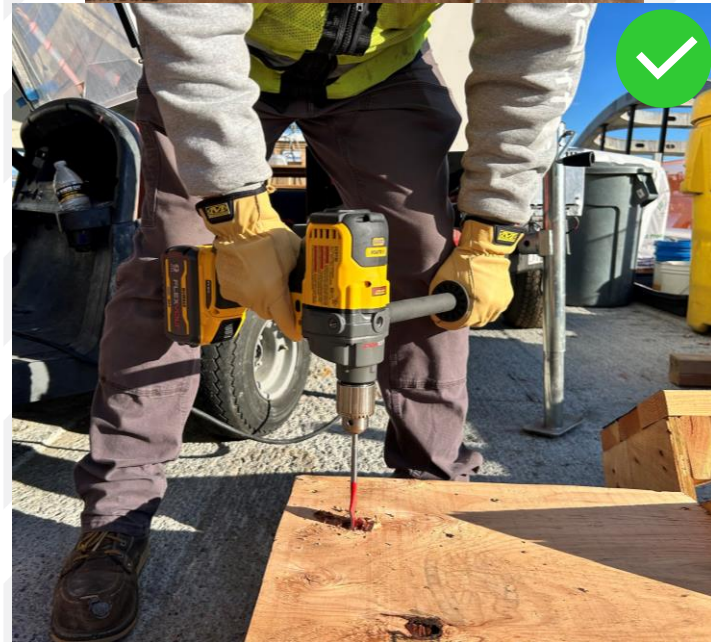
- Only trained workers can operate the tool
- Wear PPE required by the project
- De-energize the tool by removing the battery/unplugging
- Inspect the tool for damage and functionality
- Attach the secondary handle

SET UP & ACCESS

- Use a table, sawhorse, or other established cutting station
- Know what is behind/under the work
- Inspect the bit and cord for damage
- Be sure the drill bit is set and locked
- Be sure the work is well secured

USING THE DRILL

- Always use two hands and when applicable, use the secondary handle.
- Use a strong stance and keep the work low if possible. Be prepared for the drill to catch on material and “jerk”.



**PERFORM
PROTECT™**

DEWALT

Scan for the Tool Video

Drill Motor Special PPE

- Standard leather gloves, or other approved for the operation
- Weather conditions may require foam lined glasses or goggles.
- Any work above shoulder height needs level 3 eye protection (glasses & face shield or monogoggles)

Drill Motor “Do Not’s”

Do not use the drill with loose clothing and avoid using near hair

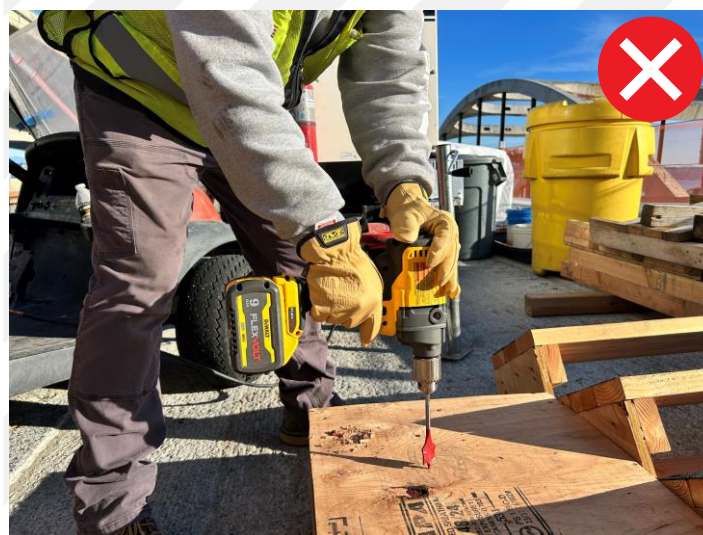
Do not hold unsecured work with your hand

Do not force the drill. Change the bit if it is worn or not correct

Do not change the bit while the drill is energized

Do not operate the drill without a second handle if required

Do not grab the check and pull the trigger to loosen/tighten the bit



Scan for the Tool Video

SIGN OFFS

Project: _____ Date: _____

Superintendent: _____ Foreman: _____

CREW MEMBER SIGN OFF

