

PRIOR TO USE & PRE-CUTTING INSPECTION

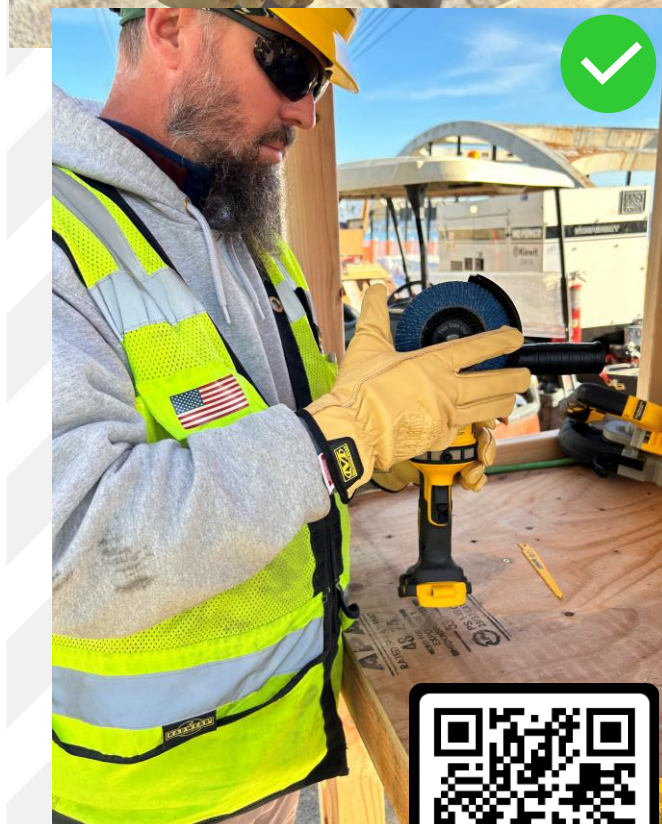
- Only trained workers can operate the tool
- Wear PPE required by the project
- De-energize the tool by removing the battery/unplugging
- Inspect the tool for damage and functionality
- Ensure a properly rated disk for the tool and task is used
- Attach the secondary handle & guards
- Attach dust control equipment (if needed)

SET UP & ACCESS

- Use a table, sawhorse, etc.
- Remove tripping hazards around the station
- Keep all cords clear of cutting path
- Check material for obstructions such as nails and screws
- Secure the work while cutting/grinding

USING THE GRINDER

- Always keep both hands on the tool and secondary handle
- Adjust the guard to project sparks away from personnel
- Clean up debris as you go



Scan for the Tool Video

Grinder Special PPE

- Ear Plugs
- Standard leather gloves, or other approved for the operation
- Level 3 (Full Face) eye protection is required
- If required, follow OSHA Table 1 for more PPE requirements
- Fire extinguisher is required if sparks are generated

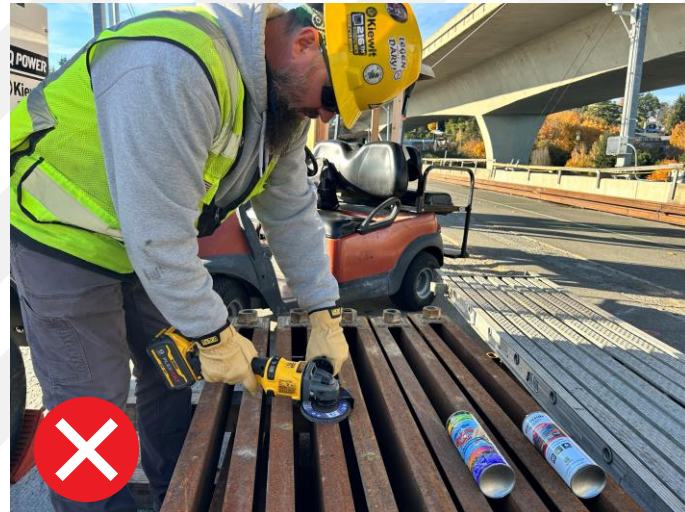
Grinder “Do Not’s”

Do not use grinder without a secondary handle or guard

Do not use the grinder if it has been damaged in any way

Do not use the grinder with loose clothing or jewelry

Do not use the grinder around flammables or near people in the path of travel for debris



Scan for the Tool Video

SIGN OFFS

Project: _____ Date: _____
Superintendent: _____ Foreman: _____

CREW MEMBER SIGN OFF



Scan for the Tool Video