

PRIOR TO USE & PRE-CUTTING INSPECTION

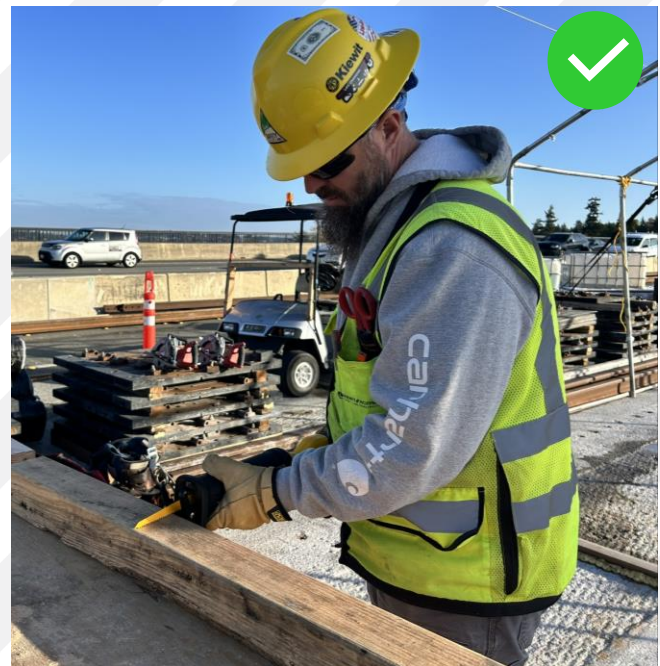
- Only trained workers can operate the tool
- Wear PPE required by the project
- De-energize the tool by removing the battery
- Inspect the tool for damage and functionality
- Ensure the blade is sharp & recommended for the task by the manufacturer

SET UP & ACCESS

- Setup a cut station when feasible
- Secure the work before cutting
- Remove tripping hazards around the station
- Keep all cords clear of cutting path
- Check material for obstructions such as nails, screws or electrical cords

USING THE SAW

- Use both hands to operate the saw behind the boot and foot
- Clean up debris as you go
- After use, or before changing the blade, de-energize the tool by removing the battery



Scan for the Tool Video

Reciprocating Saw “Do Not’s”

Do not place hands under or around the blade

Do not force the saw during cutting

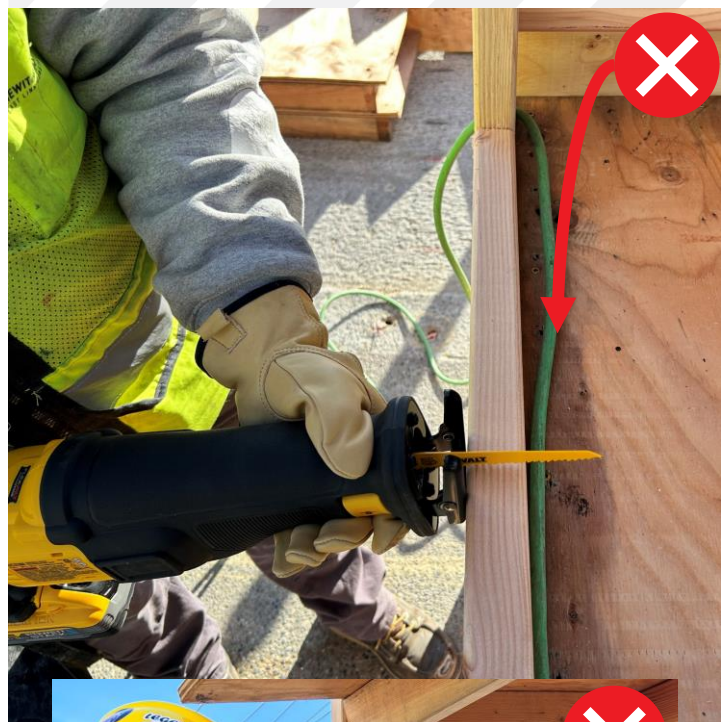
Do not use any part of your body to support material being cut

Do not place any body part in line of travel of the blade

Do not remove blade while the tool is energized

Do not make a cut without knowing what is on the other side: cords, fingers etc.

Do not touch the trigger when the saw is resting next to your body



Scan for the Tool Video

SIGN OFFS

Project: _____ Date: _____

Superintendent: _____ Foreman: _____

CREW MEMBER SIGN OFF

