

TOOL TRAINING

CIRCULAR SAW

Kiewit

PRIOR TO USE & PRE-CUTTING INSPECTION

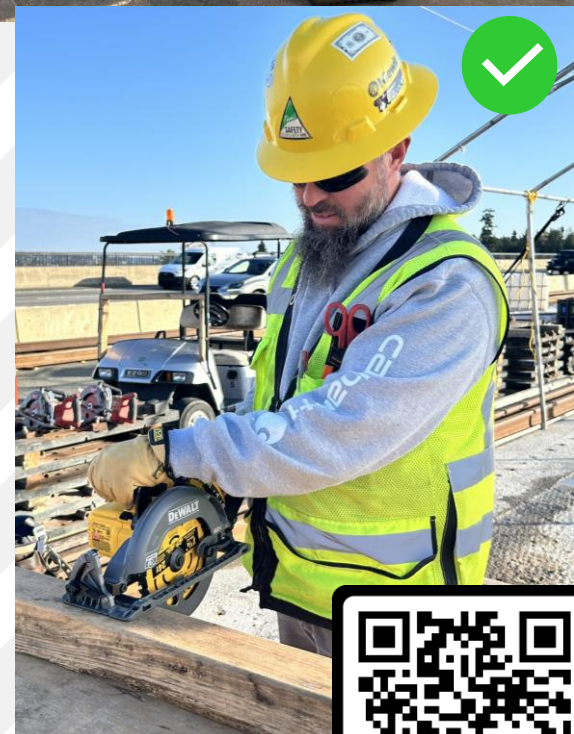
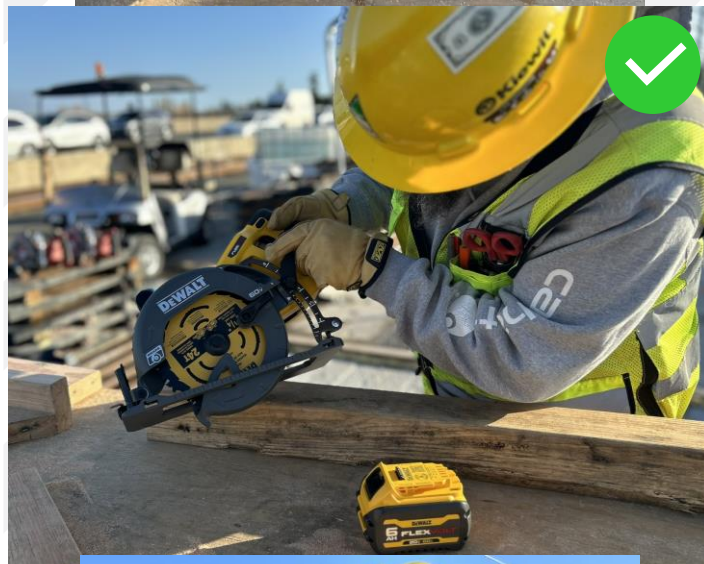
- Only trained workers can operate the tool
- Wear PPE required by the project
- De-energize the tool by removing the battery
- Inspect the tool for damage and functionality
- Ensure the blade is sharp & and the recommended size/type by the manufacturer
- Check the lower blade guard before use

SET UP & ACCESS

- Use a table, sawhorse, or other established cutting station
- Secure the work while cutting
- Remove tripping hazards around the station
- Keep all cords clear of cutting path
- Check material for obstructions such as nails and screws
- Ensure proper lighting for the area
- Set the proper depth of the blade

USING THE SAW

- Use both hands to operate the saw
- Wait for the blade to come to a complete stop before setting down or hanging
- Clean up debris as you go



Scan for the Tool Video

**PERFORM
PROTECT™**

DEWALT

TOOL TRAINING CIRCULAR SAW

Kiewit

Circular Saw “Do Not’s”

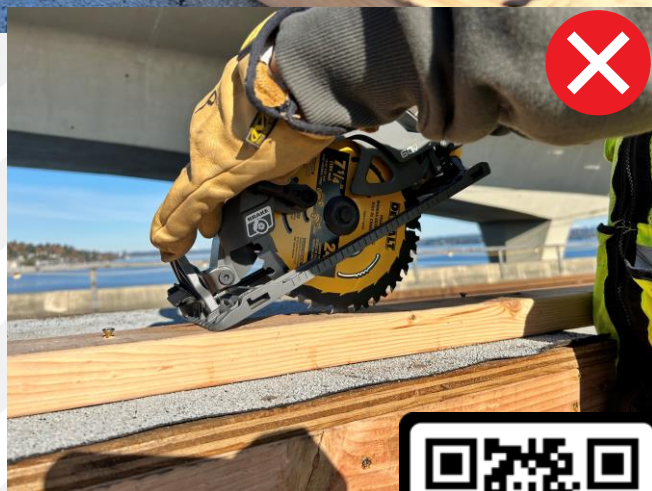
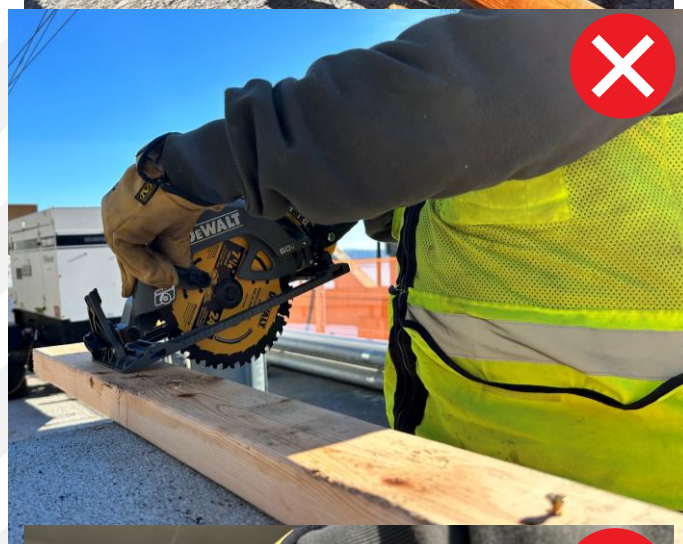
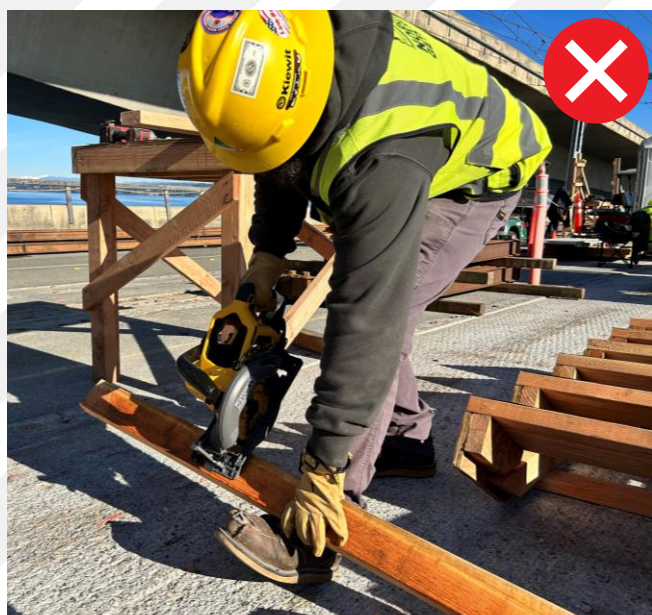
No free cutting

Do not force the saw during cutting

Do not over tighten the saw blade locking nut

Do not fix, or hold, the lower retractable blade guard in the open position

Plunge Cutting: see Foreman for direction



Scan for the Tool Video

**PERFORM
PROTECT™**

DEWALT

SIGN OFFS

Project: _____ Date: _____

Superintendent: _____ Foreman: _____

CREW MEMBER SIGN OFF

