



HAND TOOLS

KEEP YOUR HANDS IN THE RIGHT PLACE



CRUSH POINT / TWIST

Always have control and stability with tool usage.

*Rattle guns **always** need 2 hands for control away from the bit.*



HAND TOOLS

KEEP YOUR HANDS IN THE RIGHT PLACE



CRUSH POINT

Not having a secondary handle in place allows the potential for the glove to get caught in the blade while using.

Hand tools should have a secondary handle for better stability and positioning.



HAND TOOLS

KEEP YOUR HANDS IN THE RIGHT PLACE



PUMP CONNECTIONS

PINCH POINT

When connecting the hose keep your fingers out of the pinch zone between the clip and the connection.

Use open hand method or a tool to tighten the clasp.



HAND TOOLS

KEEP YOUR HANDS IN THE RIGHT PLACE



**HAND
PLACEMENT
WITH USING
DOUBLE JACK**

*Handle protector
provides protection for
handle (wear and tear)
and keeps hand back
from crush point.*



HAND TOOLS

KEEP YOUR HANDS IN THE RIGHT PLACE



FENCE POSTS

PINCH / CRUSH POINT

When installing fence posts with 2 people make sure the 2nd persons hands are far enough out of the danger zone.



HAND TOOLS

KEEP YOUR HANDS IN THE RIGHT PLACE



CIRCULAR SAW BLADE REMOVAL

When removing the blade de-energize tool, retract the guard and use the locking mechanism to enable the wrench to loosen the blade.



HAND TOOLS

KEEP YOUR HANDS IN THE RIGHT PLACE



GRINDER BLADE REMOVAL

De-energize tool and then use locking mechanism with a screwdriver to loosen and remove the blade.



This keeps your hands out of the way, so you don't catch your hand on the guard while spinning.

HAND TOOLS

KEEP YOUR HANDS IN THE RIGHT PLACE



TEAM LIFT

PINCH / CRUSH POINTS

Make sure to use the designated handles when loading or unloading equipment.

Always a two man lift if the weight is over 50lbs.



HAND TOOLS

KEEP YOUR HANDS IN THE RIGHT PLACE



**WRENCH IT
RIGHT!**

Right wrench?

*Thinking about the
what if's.*

Re-position?

Stored energy.



HAND TOOLS

KEEP YOUR HANDS IN THE RIGHT PLACE

JUMPING JACK BODY PLACEMENT

How many of us have stood and observed a good operator on the compactor?

He is very conscious of hand placement.



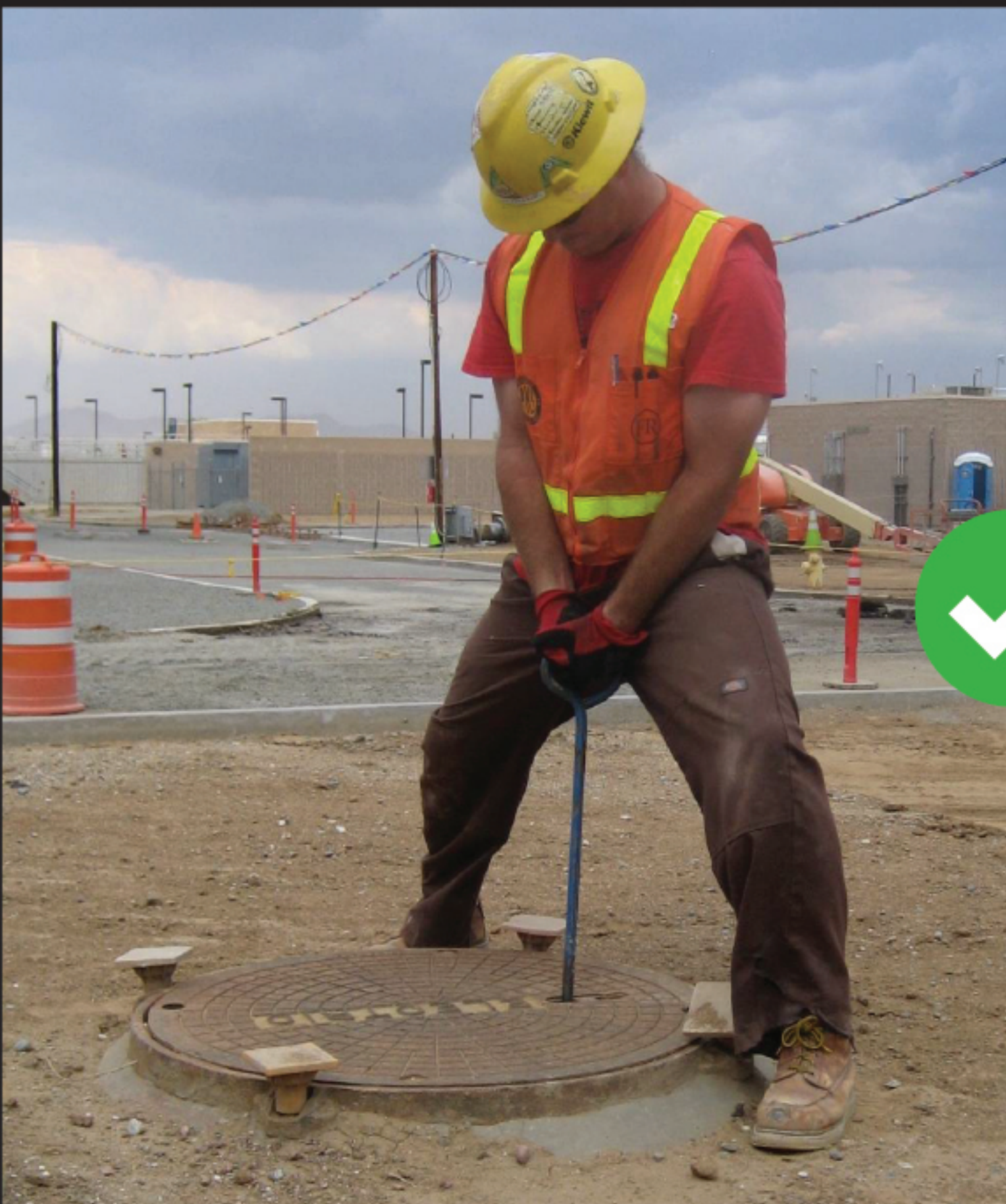
HAND TOOLS

KEEP YOUR HANDS IN THE RIGHT PLACE



PULLING MANHOLES

*Right tool for the job can
alleviate many crush
points.*



HAND TOOLS

KEEP YOUR HANDS IN THE RIGHT PLACE

CHIPPING GUN

It can be as simple as re-positioning the tool or sometimes switch to a more manageable tool.



HAND TOOLS

KEEP YOUR HANDS IN THE RIGHT PLACE

RECIPROCATING SAW

How many accident alerts have we seen over this?

Other sawzalls have better guards.



HAND TOOLS

KEEP YOUR HANDS IN THE RIGHT PLACE



PRESSURE WASHER

CRUSH POINT

*When using the pull cord have a solid hand to hold yourself up on when pulling the cord (make sure the steady point is **NOT** hot).*



The bar beneath is used for loading and unloading and will flip your hand into the pavement.

HAND TOOLS

KEEP YOUR HANDS IN THE RIGHT PLACE



CRUSH POINT

Never touch a spinning barrel.

Use a guide to start new holes.

