

TOOLBOX TRAINING

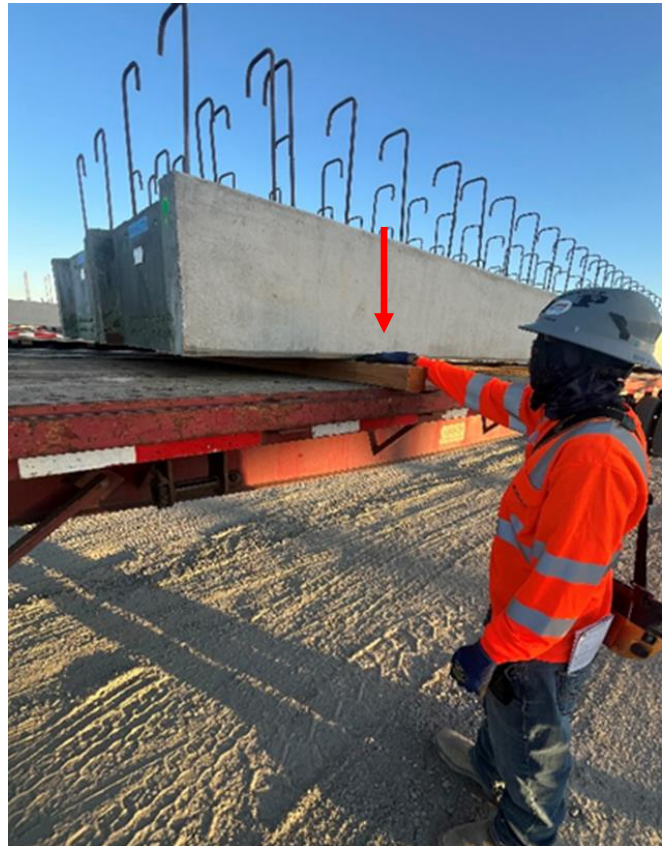
CRUSH POINT RECORDABLE HAND INJURY

INCIDENT DESCRIPTION:

A gantry crane crew was loading a precast concrete beam onto a trailer when the spotter tried to adjust a cushion pad between the beam and dunnage. The operator, not paying attention, lowered the load without communicating, crushing the employee's right hand.

CONTRIBUTING FACTORS:

- Crane operator lowered the load without a signal or any communication with the spotter.
- Spotter failed to recognize the crush point and placed his hand under the load.
- Crane operator did not have sight of his spotter.



KEY TAKEAWAYS FOR EVERY EMPLOYEE:

Never place your hand into a crush point unless we have some way to ensure the crush hazard is controlled. Use a tool or plan the crush point out of the work.

Ensure you always have positive confirmation with operators when working around cranes, suspended loads, or equipment.

Utilize the operations Start Card to discuss crush points associated with the operation – be detailed!

Similar to spotting equipment, if you lose sight of your spotter, you should always stop and wait!

TOOLBOX TRAINING

CRUSH POINT RECORDABLE HAND INJURY

PROJECT:		DATE:	
SUPERINTENDENT :		FOREMAN:	

With your crew members, discuss the following question:

1. How would an injury like this IMPACT you, your family and your work?



CREW MEMBER SIGN OFF		